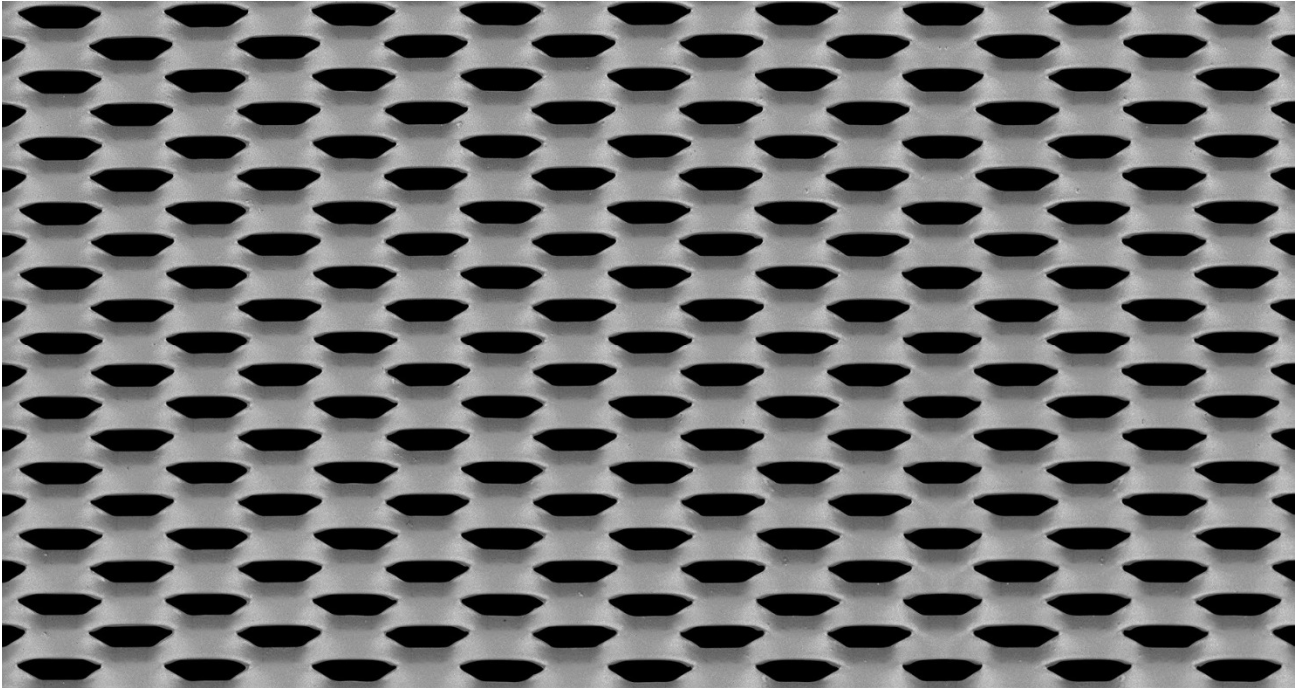




## Expanded Metal – Product Data Sheet – Ceiling Tile Mesh

Mesh Ref No: **HEX 19-24**

**Raised Mild Steel Mesh**



<b>LW Pitch:</b>	<b>19.05mm</b>	<b>Strand Width:</b>	<b>3.00mm</b>
<b>SW Pitch:</b>	<b>7.62mm</b>	<b>Thickness:</b>	<b>0.60mm</b>
<b>Weight:</b>	<b>3.90 kg / m<sup>2</sup></b>	<b>Open Area:</b>	<b>21%</b>

**Sheet Size:** 595mm LWD x 595mm SWD – Plus custom sizes made to order.

**Material:** Mild Steel – Cold Reduced DC01 to BS EN 10130  
Pre Galvanised Steel – DX51D +Z, Aluminium – Grade 1050 H14

All expanded metal products are manufactured from a single piece of raw material and are created as a continuous mesh with no joints or loose strands. The finished product has a greater strength to weight ratio than the un-expanded parent material. Available in sheets or coil form (certain products only). Expanded metal by its very nature is a green product with almost no wastage arising from the manufacturing process. Additional specification variations are available, please contact us for more information.

© Metal Mesh UK Limited. All Rights Reserved.

**Freephone: 0800 999 2089**  
**www.metal-mesh.co.uk**

**Tel: +44 (0)1386 555 500**  
**sales@metal-mesh.co.uk**

Metal Mesh UK Limited. Reet House, Keytec East Business Park, Pershore, Worcestershire, WR10 2NX.