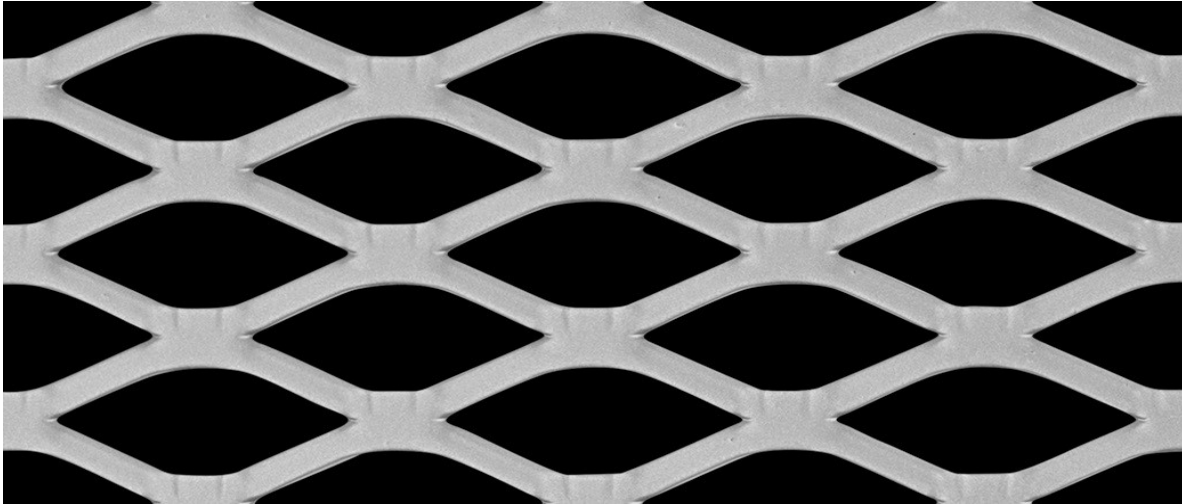




## Expanded Metal – Product Data Sheet

Mesh Ref No: 50-73F-XXL Fence Mesh

Mild Steel – Hot Dip Galv Finish.



LW Aperture: 42.93mm (50.80mm Pitch)  
SW Pitch: 14.22mm (23.42mm Pitch)  
Weight: 8.59 kg / m<sup>2</sup> (Black Weight)

Strand Width: 4.60mm  
Thickness: 2.69mm  
Open Area: 61%

Material: Mild Steel – Hot Dip Galvanized to BS EN 1461: 2009  
Sheet Size: 1830mm & 2440mm High x 3048mm (to suit 3.00 metre post centres)  
Optional Finish: All our fence panels can be supplied PPC painted if required.  
Extra Info: Flat surface mesh to fit flush to posts.

All expanded metal products are manufactured from a single piece of raw material and are created as a continuous mesh with no joints or loose strands. The finished product has a greater strength to weight ratio than the un-expanded parent material. Available in sheets or coil form (certain products only). Expanded metal by its very nature is a green product with almost no wastage arising from the manufacturing process.  
Additional specification variations are available, please contact us for more information. © Metal Mesh UK Limited. All Rights Reserved.

Freephone: 0800 999 2089  
[www.metal-mesh.co.uk](http://www.metal-mesh.co.uk)

Tel: +44 (0)1386 555 500  
[sales@metal-mesh.co.uk](mailto:sales@metal-mesh.co.uk)

Metal Mesh UK Limited. Reet House, Keytec East Business Park, Pershore, Worcestershire, WR10 2NX.

**WHEN PRINTED ON A4 PAPER THE MESH IMAGE ABOVE IS DISPLAYED LIFE SIZE**