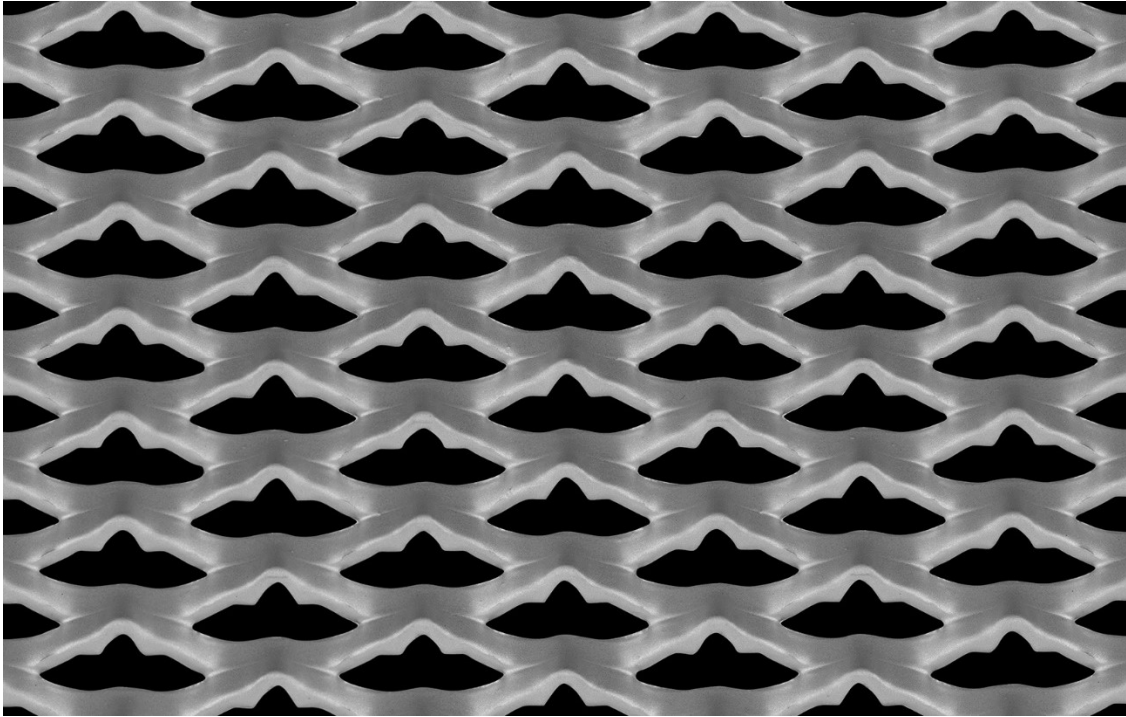




Expanded Metal – Product Data Sheet

Mesh Ref No: 38-78WRN

Raised Mild Steel Walkway Mesh



LW Pitch: 38.10mm
SW Pitch: 13.85mm
Weight: 13.40 kg / m²

Strand Width: 4.75mm
Thickness: 2.50mm
Open Area: 29%

Material: Mild Steel – Hot Rolled to BS EN 10111
Sheet Size: 1000mm LWD x 1525mm SWD

All expanded metal products are manufactured from a single piece of raw material and are created as a continuous mesh with no joints or loose strands. The finished product has a greater strength to weight ratio than the un-expanded parent material. Available in sheets or coil form (certain products only). Expanded metal by its very nature is a green product with almost no wastage arising from the manufacturing process. Additional specification variations are available, please contact us for more information.

© Metal Mesh UK Limited. All Rights Reserved.

Freephone: 0800 999 2089
www.metal-mesh.co.uk

Tel: +44 (0)1386 555 500
sales@metal-mesh.co.uk

Metal Mesh UK Limited. Reet House, Keytec East Business Park, Pershore, Worcestershire, WR10 2NX.