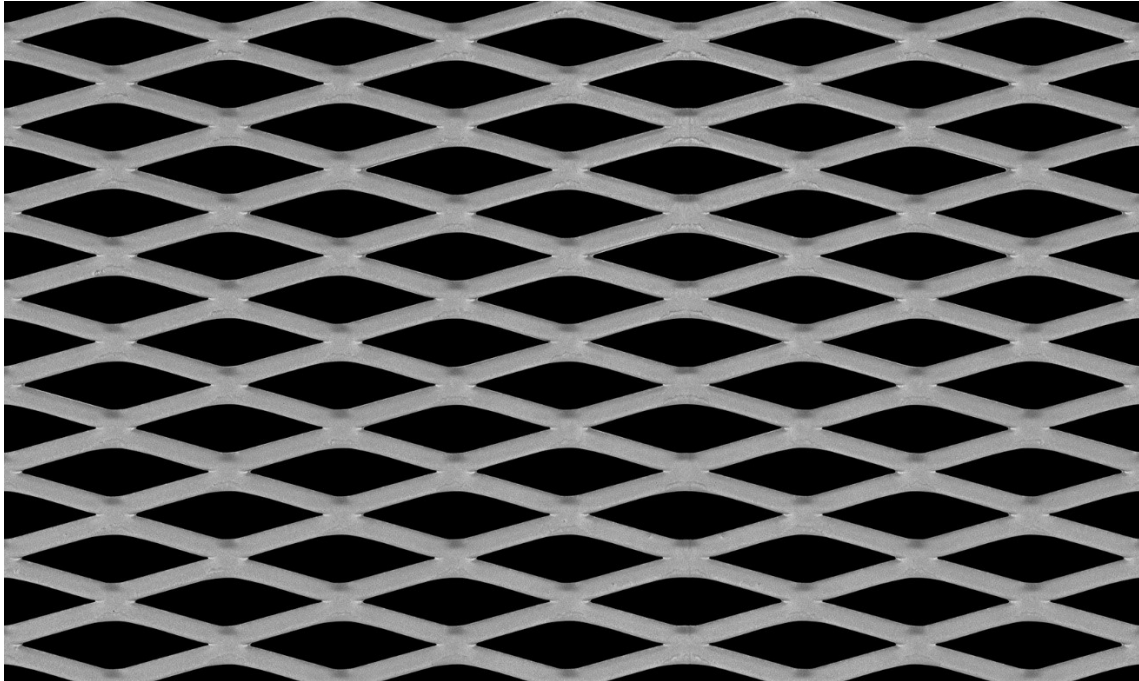




## Expanded Metal – Product Data Sheet

Mesh Ref No: 30-79F

Flattened Mild Steel Mesh



LW Aperture:	23.11mm	Strand Width:	3.20mm
SW Aperture:	5.84mm	Thickness:	1.52mm
Weight:	6.27 kg / m <sup>2</sup>	Open Area:	48%
Material:	Mild Steel – Cold Reduced DC01 to BS EN 10130		
Sheet Size:	2440mm LWD x 1220mm SWD		

All expanded metal products are manufactured from a single piece of raw material and are created as a continuous mesh with no joints or loose strands. The finished product has a greater strength to weight ratio than the un-expanded parent material. Available in sheets or coil form (certain products only). Expanded metal by its very nature is a green product with almost no wastage arising from the manufacturing process. Additional specification variations are available, please contact us for more information.

© Metal Mesh UK Limited. All Rights Reserved.

Freephone: 0800 999 2089  
[www.metal-mesh.co.uk](http://www.metal-mesh.co.uk)

Tel: +44 (0)1386 555 500  
[sales@metal-mesh.co.uk](mailto:sales@metal-mesh.co.uk)

Metal Mesh UK Limited. Reet House, Keytec East Business Park, Pershore, Worcestershire, WR10 2NX.