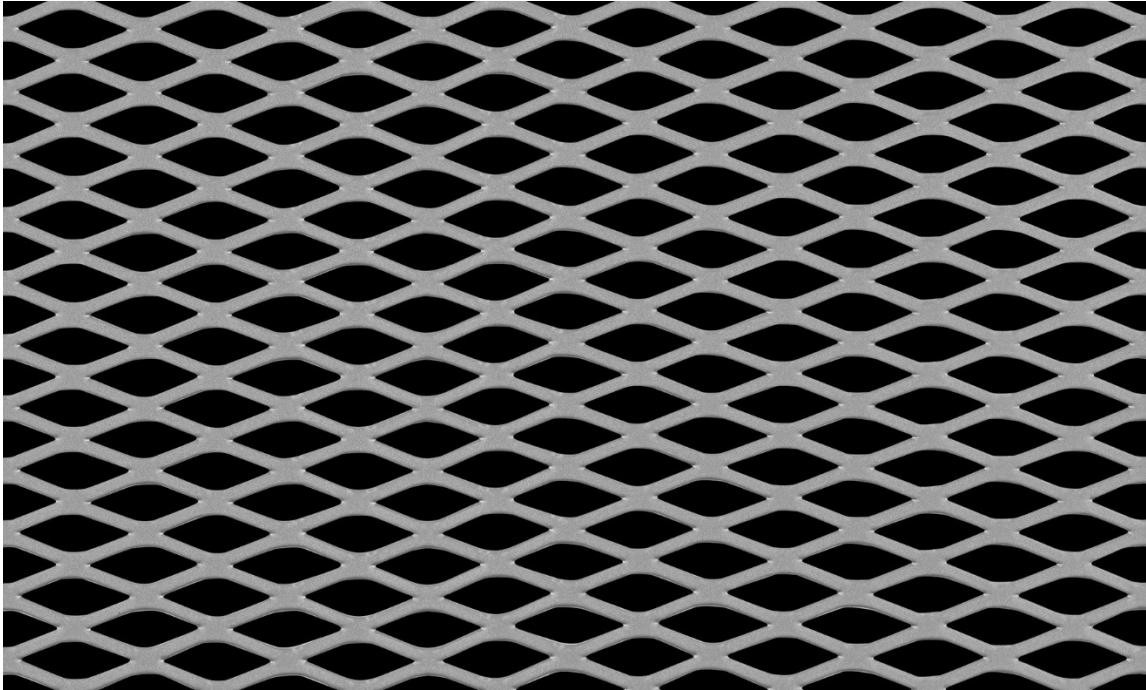




## Expanded Metal – Product Data Sheet

Mesh Ref No: 19-94F

Flattened Mild Steel Mesh



LW Aperture: 14.22mm  
SW Aperture: 4.80mm  
Weight: 3.07 kg / m<sup>2</sup>

Strand Width: 1.85mm  
Thickness: 0.90mm  
Open Area: 56%

Material: Mild Steel – Cold Reduced DC01 to BS EN 10130  
Sheet Size: 1250mm LWD x 2500mm SWD

All expanded metal products are manufactured from a single piece of raw material and are created as a continuous mesh with no joints or loose strands. The finished product has a greater strength to weight ratio than the un-expanded parent material. Available in sheets or coil form (certain products only). Expanded metal by its very nature is a green product with almost no wastage arising from the manufacturing process. Additional specification variations are available, please contact us for more information.

© Metal Mesh UK Limited. All Rights Reserved.

Freephone: 0800 999 2089  
[www.metal-mesh.co.uk](http://www.metal-mesh.co.uk)

Tel: +44 (0)1386 555 500  
[sales@metal-mesh.co.uk](mailto:sales@metal-mesh.co.uk)